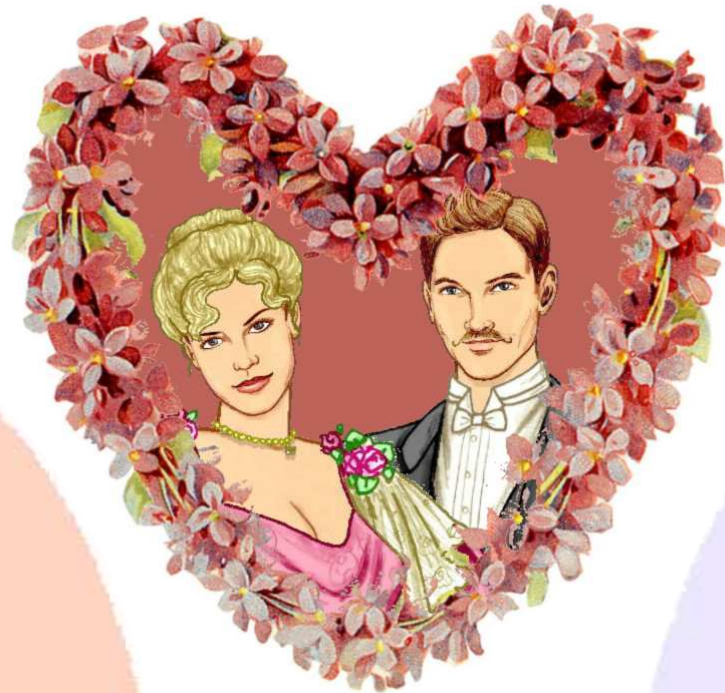


*A fashionable couple
of the 1890s*



1890



*Lady & gentleman's
eveningwear*





1890

*Lady's boating costume
& gentleman's rowing attire*



1891



*Lady & gentleman's tennis
costumes*

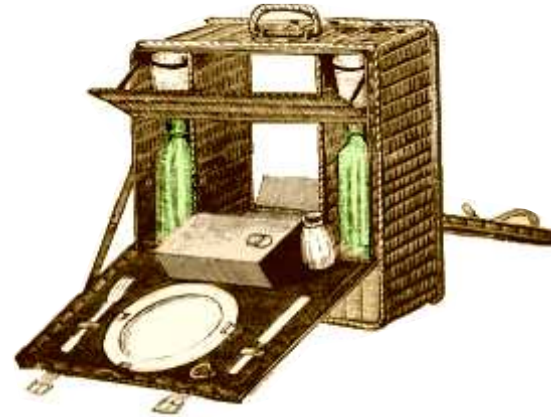


1891



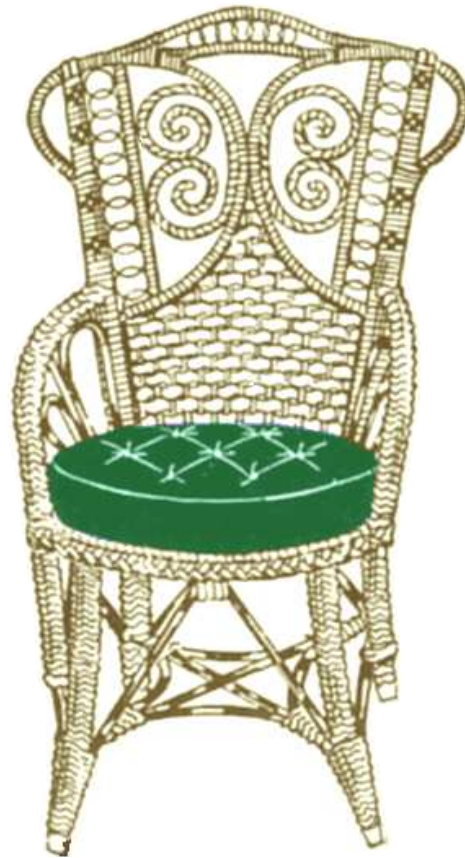
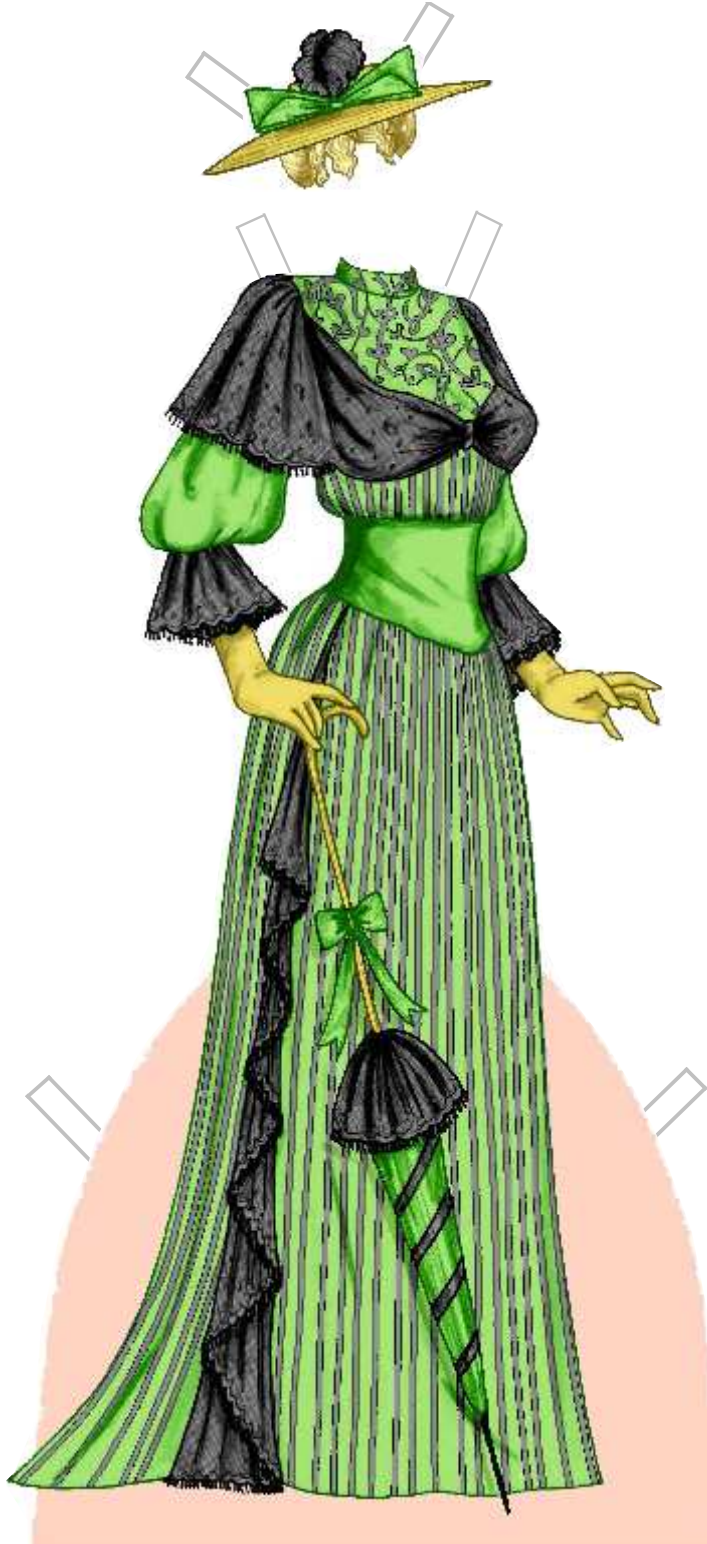
glue round dotted outer edge and affix to back of parasol making a pocket for doll to slide into

Lady's summer gown & gentleman's country attire



1892

Lady & gentleman's daywear



1892

*Lady & gentleman's
eveningwear*





1893

*Lady & gentleman's
daywear*



1893

*Lady & gentleman's
wedding attire*

glue round dotted outer
edge and affix to back
of veil making a pocket
for doll to slide into



1894

*Lady's cycling costume &
gentleman's country attire*



1894

Lady &
gentleman's eveningwear



1895



*Lady &
gentleman's dinner attire*



1895



*Lady &
gentleman's costumes for a
garden party*

1896

*Lady &
gentleman's bathing costumes*



1896

*Lady &
gentleman's daywear*



1897

*Lady &
gentleman's daywear*



1897

*Lady's visiting gown &
gentleman's daywear*



1898



*Lady &
gentleman's coats*





1898

*Lady &
gentleman's daywear*





1899

*Lady &
gentleman's daywear*



1899

Lady & gentleman's eveningwear

